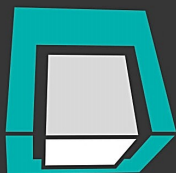




CUBIC  
CENTER



# CUBIC CENTER

Is about being your true self in a

Creative, Ultramodern, Bright, Inspiring and Captivating environment.



## Content

- Working space in a new dimension
- Being connected matters
- Modern architecture and futuristic vision
- From square to cube: Technical Information
- Cubic Center safety first
- Excellently maintained building
- See plans, make plans
- Cubic in numbers

## Working space in a new dimension

Cubic Center is a beautifully designed and well-equipped building located in one of the largest business areas of Bucharest. The contemporary facilities of high quality, modern design and generous open spaces offer the perfect environment to start or grow your business.

The building provides 28,000 sqm of flexible office space within a state-of-the-art environment, divided into 12 floors, each of them with generous terraces. The 507 underground parking spaces and 50 spaces for visitors above ground are assuring the tenants comfort.

The impressive reception and visitors lounge area on the ground floor create a powerful first impression for any business locating there.

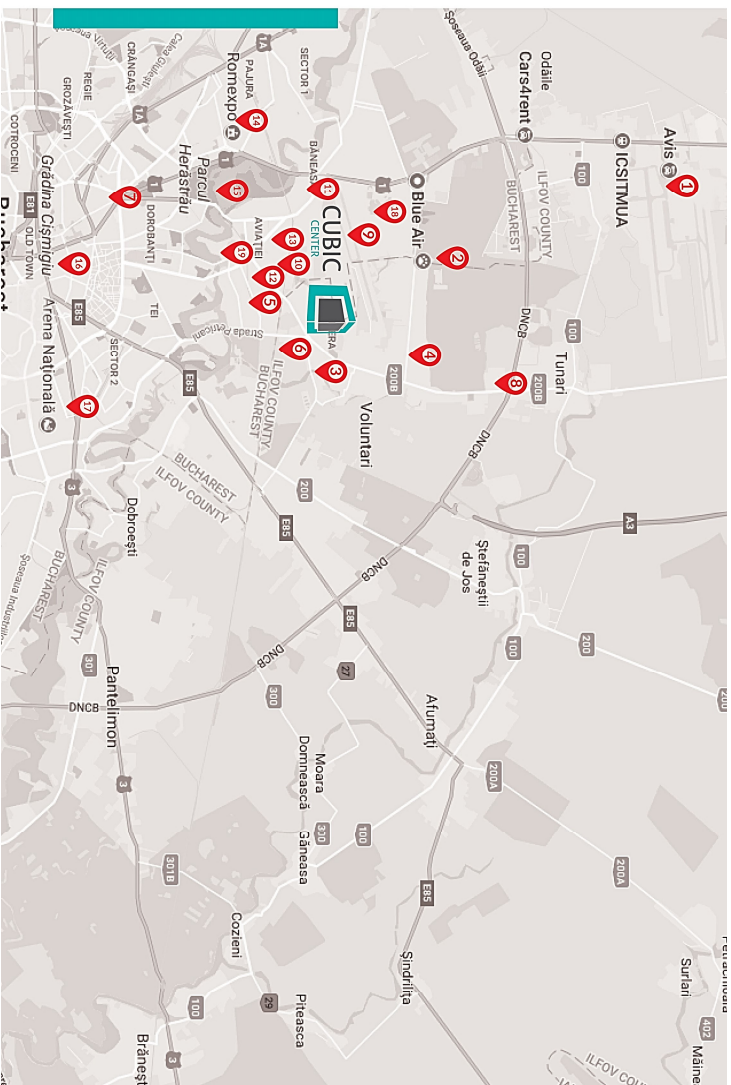


## Being connected matters

Some of the most important points of interest in the north of the capital are within close reach, both: Henri Coanda International Airport and Aurel Vlaicu International Airport being 15 minutes away by car. On a 500-meter radius, you can find a shopping mall, restaurants, coffee shops, banks, ATMs, a health club and many other facilities.

It's easy to get to Cubic Center even when you don't have a car, because there are shuttle buses and vans exclusively used by Cubic tenants waiting for you at Pipera Metro Station, with higher frequency during rush hours.

The vicinity of Barbu Vacarescu Street is another plus, granting quick access to the city center and its unlimited possibilities in food, drinks and entertainment.



- 1 ● Henri Coanda International Airport: 20 minutes by car
- 2 ● Bucharest Zoo: 10 minutes by car
- 3 ● World Class and Planet Swims&Gym: 5 minutes walk
- 4 ● British School of Bucharest: 8 minutes by car
- 5 ● Pipera Metro Station: 5 minutes by car
- 6 ● Shopping Mall Pipera Piazza: 5 minutes walk
- 7 ● Piața Victoriei: 15 minutes by car
- 8 ● American International School: 9 minutes by car
- 9 ● Aurel Vlaicu International Airport: 10 minutes by car
- 10 ● Euromaster (car repair maintenance): 7 minutes walk
- 11 ● Medcover Hospital: 6 minutes by car
- 12 ● Ita Wegman Bilingual High School: 7 minutes by car
- 13 ● Marcoveet Veterinary Hospital: 5 minutes by car
- 14 ● Romexpo: 18 minutes by car
- 15 ● Herastrau Park: 15 minutes by car
- 16 ● Old Town: 25 minutes by car
- 17 ● Mega Mall: 19 minutes by car
- 18 ● Băneasa Shopping City: 10 minutes by car
- 19 ● Promenada Mall: 10 minutes by car



06

## Modern architecture and futuristic vision

The 12-story building offers class A offices, having an architectural layout especially designed to embrace maximum natural light.

A spacious and modern reception welcomes Cubic Center's visitors from their first step in, inviting them to wait for their meeting in a comfortable waiting area.

Modern elevators take you to bright and wide offices, with full flexibility in the future space partitioning and fit out. The underground parking in Cubic Center is divided into 3 floors, accommodating a maximum of 507 cars. Additional open-air parking is also available.

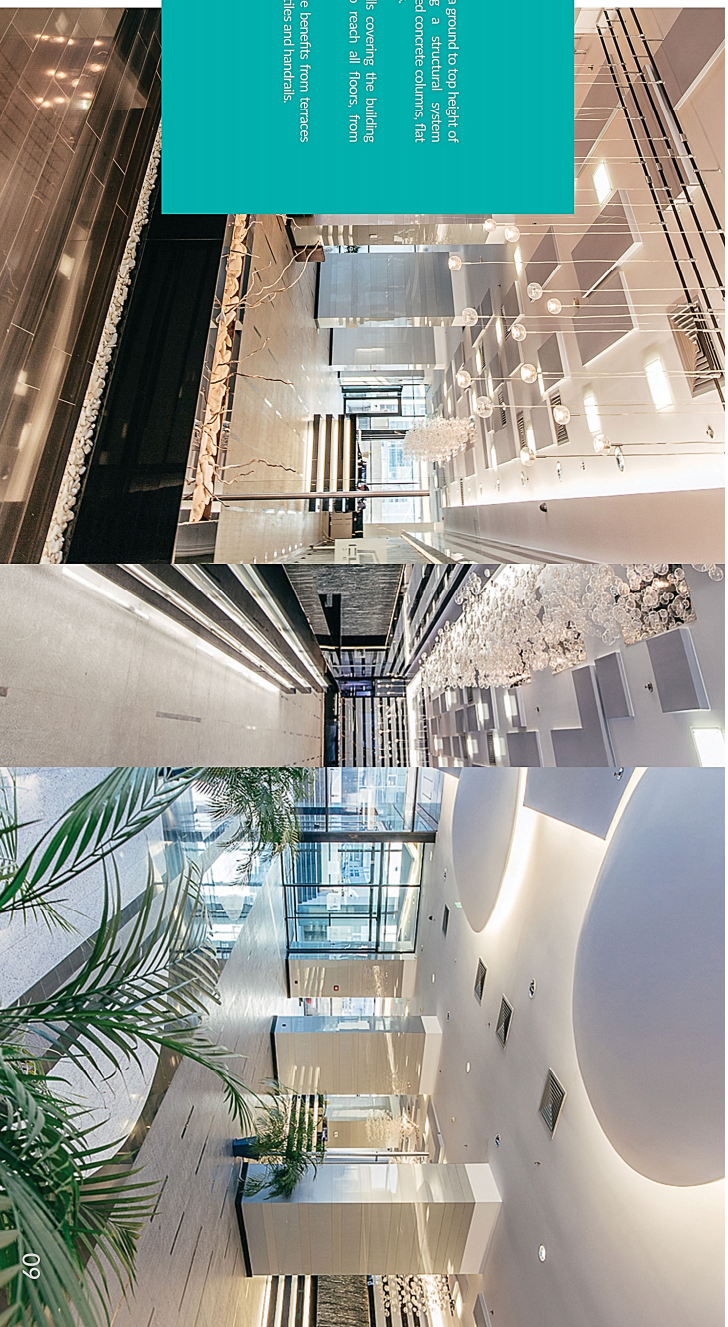
07

## From square to cube: Technical Information

The construction has a ground to top height of approx. 50m, having a structural system comprising of reinforced concrete columns, flat slabs and central cores.

The glass curtain walls covering the building allow natural light to reach all floors, from ground to top.

Each 500sqm of space benefits from terraces with anti-slip ceramic tiles and handrails.



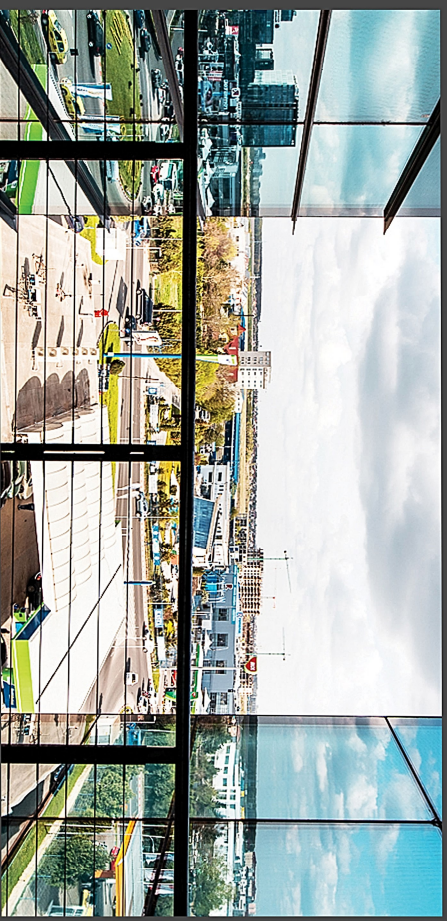
## Cubic Center: safety first

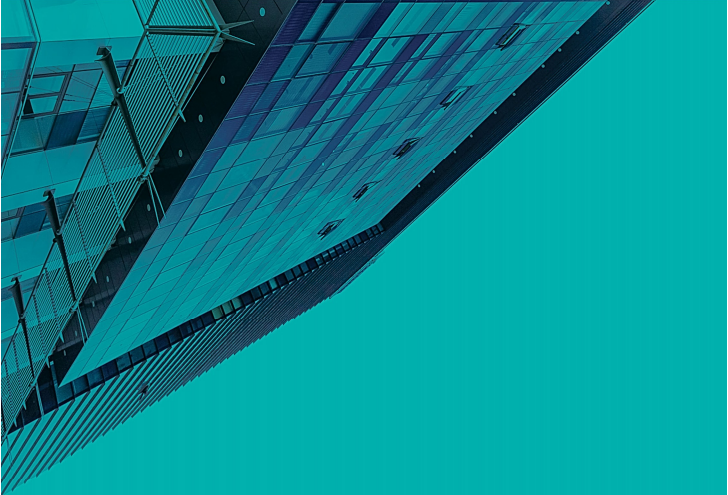
- Building Management System
- Double glazed Schuco Façade
- Indoor and Outdoor hydrant system
- Ground floor parking for visitors
- Sprinkler system
- Smoke detectors
- Fire detection and alarm system
- HVAC System
- Security Access System
- Electrical capacity of 3500 KW
- 24h security and manned reception area
- Back-up generator of 800 KVA



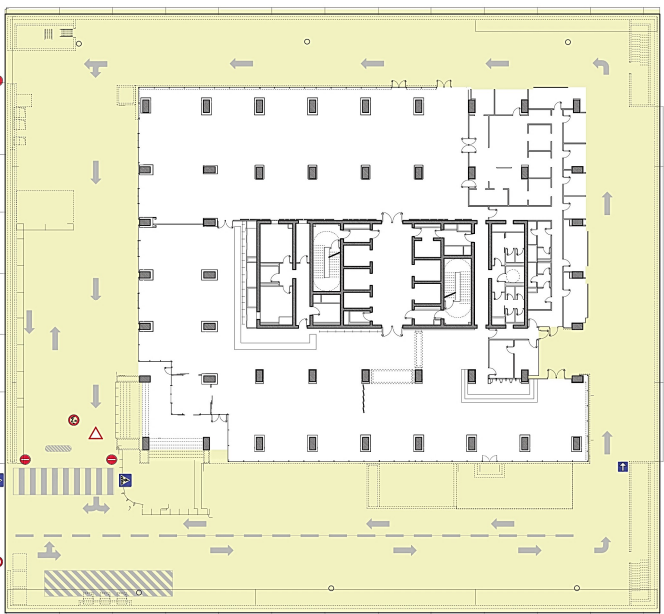
## Excellently maintained building

Besides being well equipped, modern and welcoming, Cubic Center is also excellently maintained. Periodical check-ups are rigorously made and small defects are promptly taken care of.





# SEE PLANS MAKE PLANS

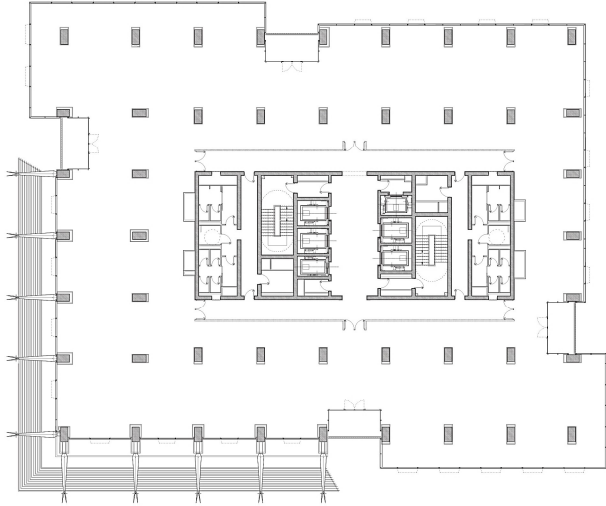




Office Area  
1 879 sqm  
Terrace  
153 sqm

## 1st Floor

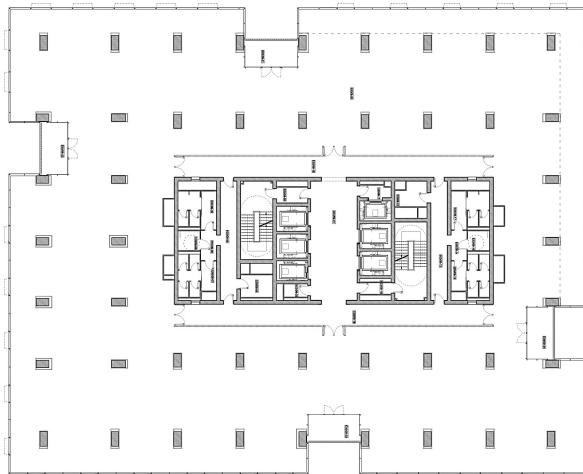
14



Office Area  
1 985 sqm  
Terrace  
55 sqm

## 2nd Floor

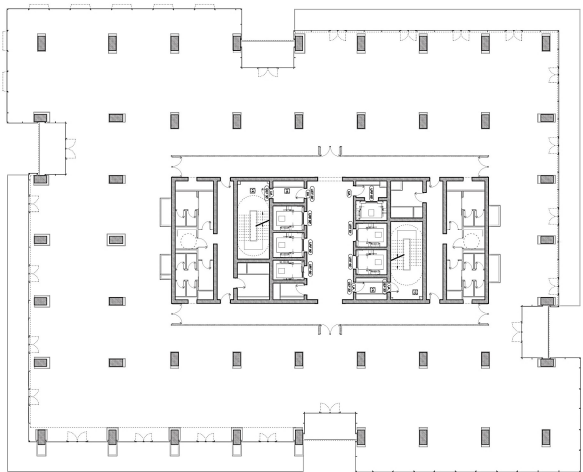
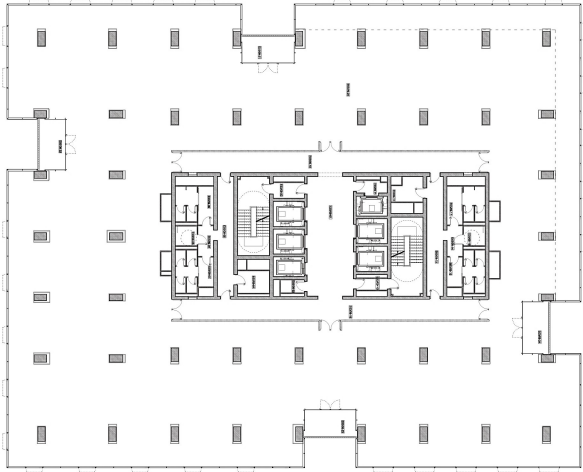
15



Office Area  
2 288 sqm  
Terrace  
54 sqm

### 3rd-9th Floor

16



Office Area  
2 090 sqm  
Terrace  
240 sqm

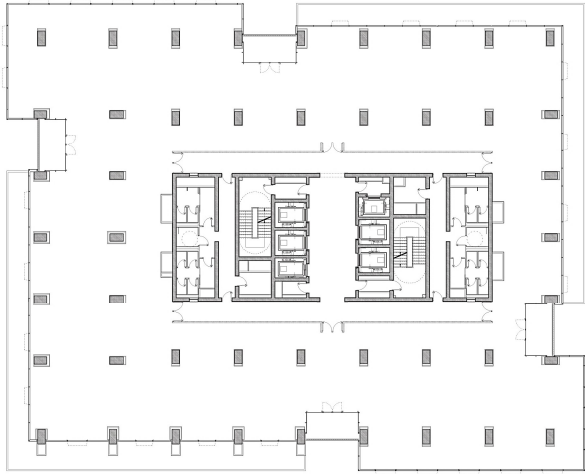
### 10th Floor

17

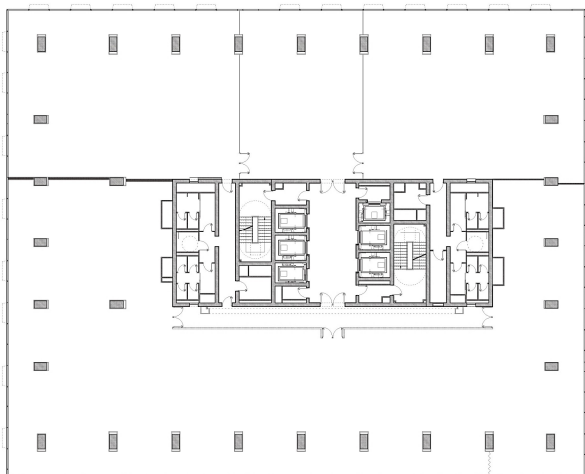
Office Area  
2 005 sqm  
Terrace  
55 sqm

## 11th Floor

18



19



Office Area  
2 398 sqm

## 12th Floor

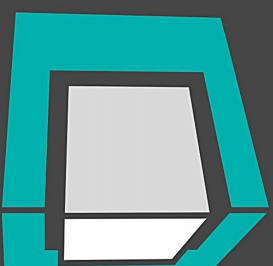
19

# Cubic in numbers

Lift (passengers)	5
Lift (freight/food)	1
Office Space	27,694 sqm
Restaurant Space	12,119 sqm
Parking places (basement)	507
Parking places (outdoors)	50
Storage Space (basement)	305 sqm



# CUBIC CENTER



Cubic Center Address:

1B Pipera Boulevard, Pipera, Voluntari,

Ifov County, Romania

Phone: +40 21 455 57 30

E-mail: [office@arres-pm.ro](mailto:office@arres-pm.ro)

Exclusive Agent:



Phone: +40 21 380 85 85

E-mail: [oliver.dertksen@ro.knightfrank.com](mailto:oliver.dertksen@ro.knightfrank.com)